



Getting You on the Road to an Enterprise-class Wireless LAN

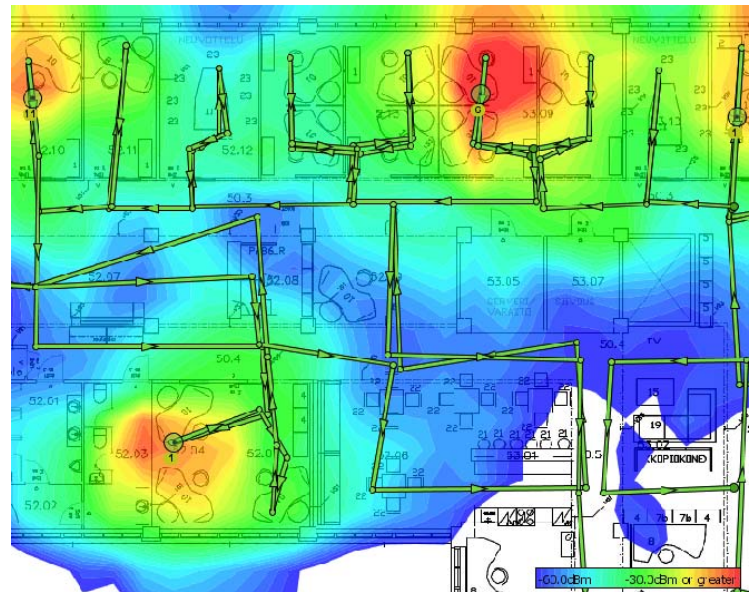
Introduction

Wireless LANs (WLANs) are becoming pervasive in today's computing environment and are now a mission critical network service and no longer a "convenience." With ever-growing usage and capacity needs, providing a robust, secure and high-performing wireless LAN presents a unique set of challenges to today's already busy IT departments. Navigating the intricacies of Radio Frequency (RF) propagation, encryption methodologies, VLAN, QoS settings and the other myriad of acronyms related to WLAN, can be a pain for IT departments that need to serve their internal customers and users who just want the network to work everywhere and work fast. That's where ezWireless can help. We understand what you're facing and we're here to help. The ezRoadMap™ Wireless LAN Survey and Deployment Plan is your starting point on an expressway to a high-performance, secure and robust WLAN.

Why Do You Need a Survey & Plan?

Building a WLAN is like building a bridge; you need something to connect you from here to there and when you're on it... you don't want it to break. As in construction, your plan for creating a wireless LAN are the foundation of your project and often determines the level of success you will achieve with your deployment and the number of phone calls to the IT department by users. The ezRoadMap™ helps you answer the following kinds of questions:

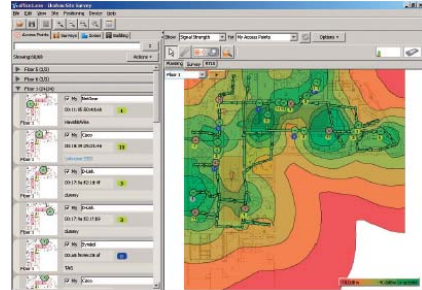
- What wireless standard should I deploy?
What's the difference between 802.11 a, b, g and n?
- How many access points do I need and where do I put them? What are my options? Which radio frequency should I use?
- How can I make sure the signal will be strong enough in all areas to support the highest speeds?
- What happens to my wireless network if bandwidth usage doubles? How can my WLAN scale?
- What about encryption and authentication? How does my WLAN connect to my existing systems?
- How do I implement a converged voice, data and video network over a WLAN?
- Once my WLAN is installed, how do I manage it?



How Does the ezRoadMap™ Work?

The job of the experienced ezWireless team is to analyze your business needs, survey your physical and RF environment, and come up with a solution design and deployment plan that will guide you to your final destination: a high-performance, enterprise-class WLAN. Our consultants and engineers will conduct the following to put together your tailored ezRoadMap™:

- Analyze the number of users, bandwidth usage, security implications, VLAN configuration and application types.
- Visit your location and use hardware and software tools to determine the best number, position, RF frequency and orientation of wireless access points.
- Compile a report with our findings and recommendations.
- Meet with you to address questions and next steps.



Ok, What's Next?

After the ezRoadMap™ is developed, ezWireless can help you get your WLAN system purchased, configured, installed, turned-up, tested, verified and optimized. We can even make the WLAN turn-key to you. Our goal is to make the process painless for you and to make sure your IT department and users have a great WLAN experience.

We also offer a version of the ezRoadMap™ designed to study existing systems and make recommendations on things like:

- Resolving existing connectivity issues
- Increasing capacity
- Migrating to 802.11n
- Adding wireless VoIP to you network

Let us know how we can help!



503-222-0241

www.ezWireless.us or www.802dot11n.com

Expand Your Range™